

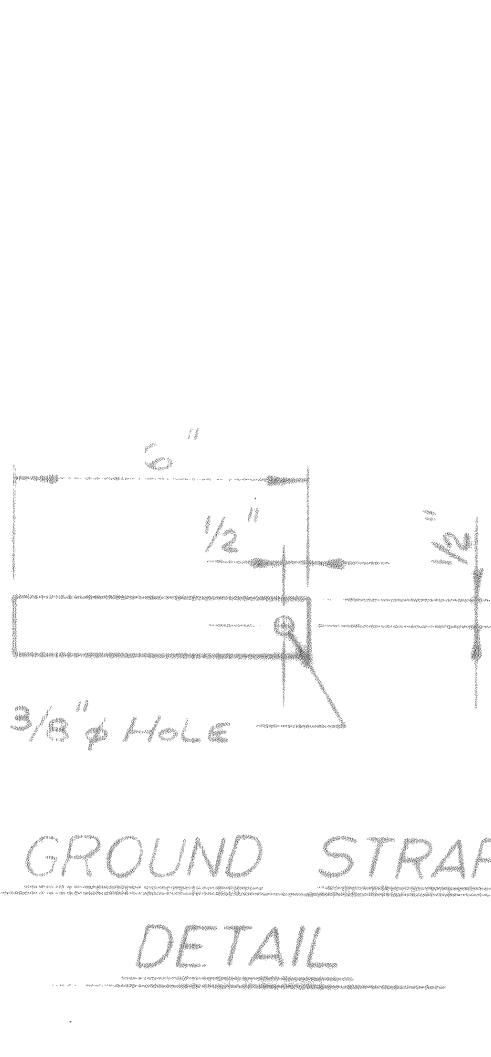
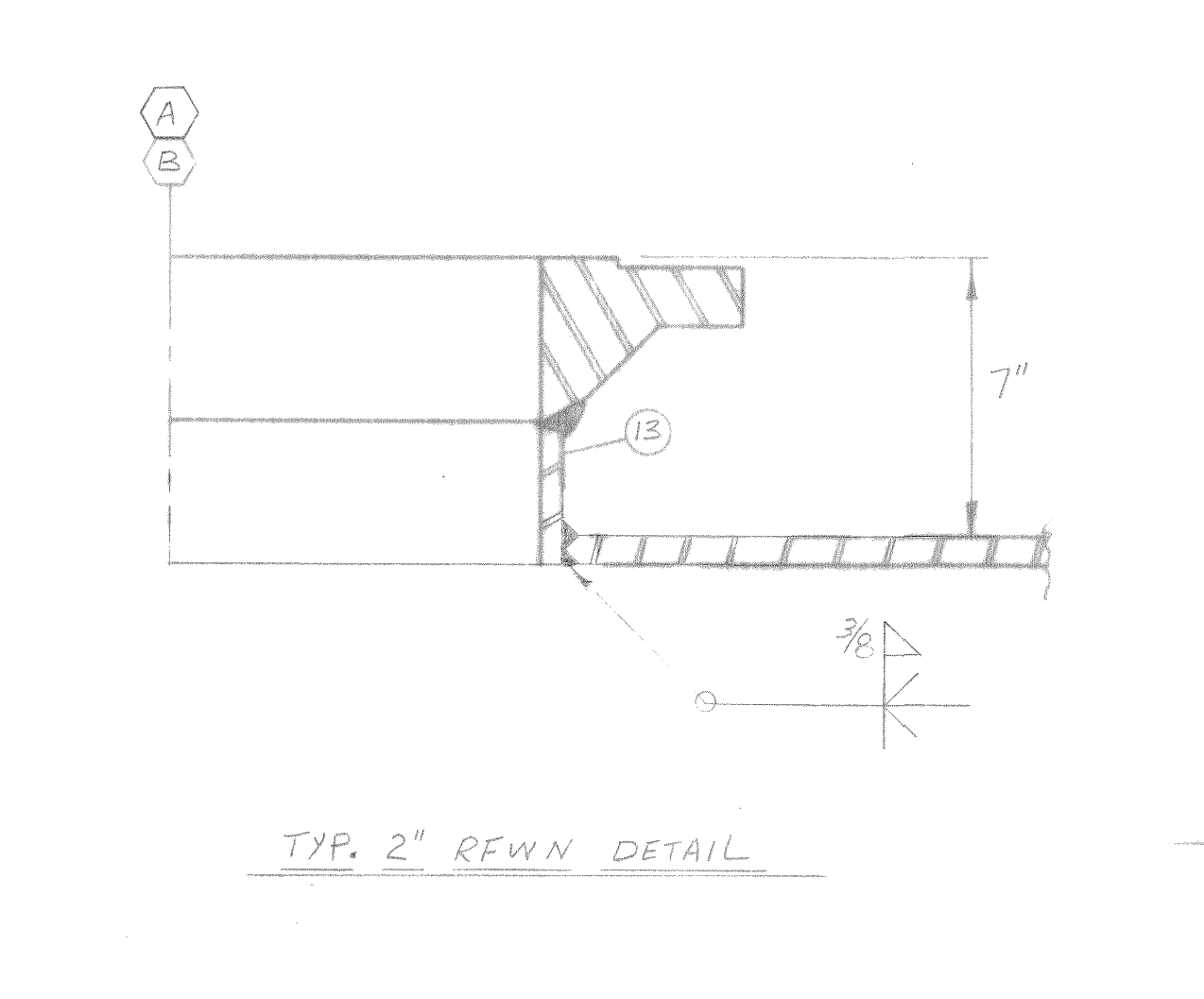
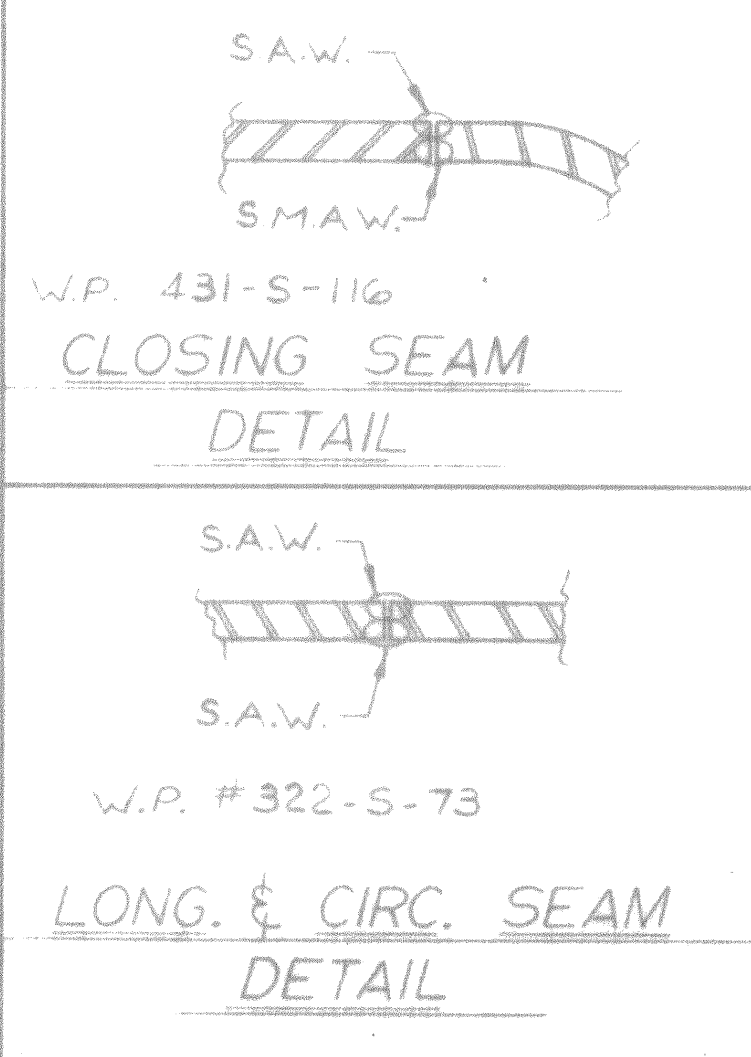
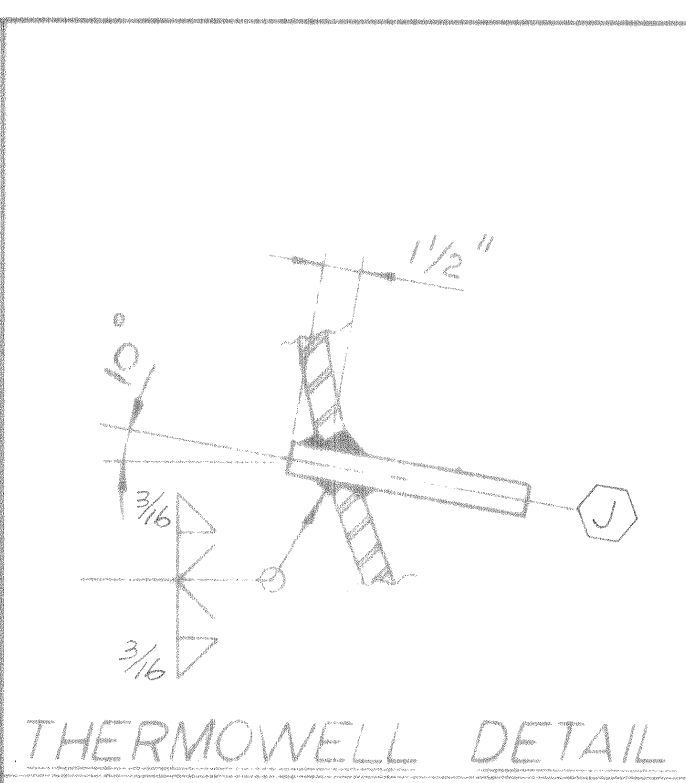
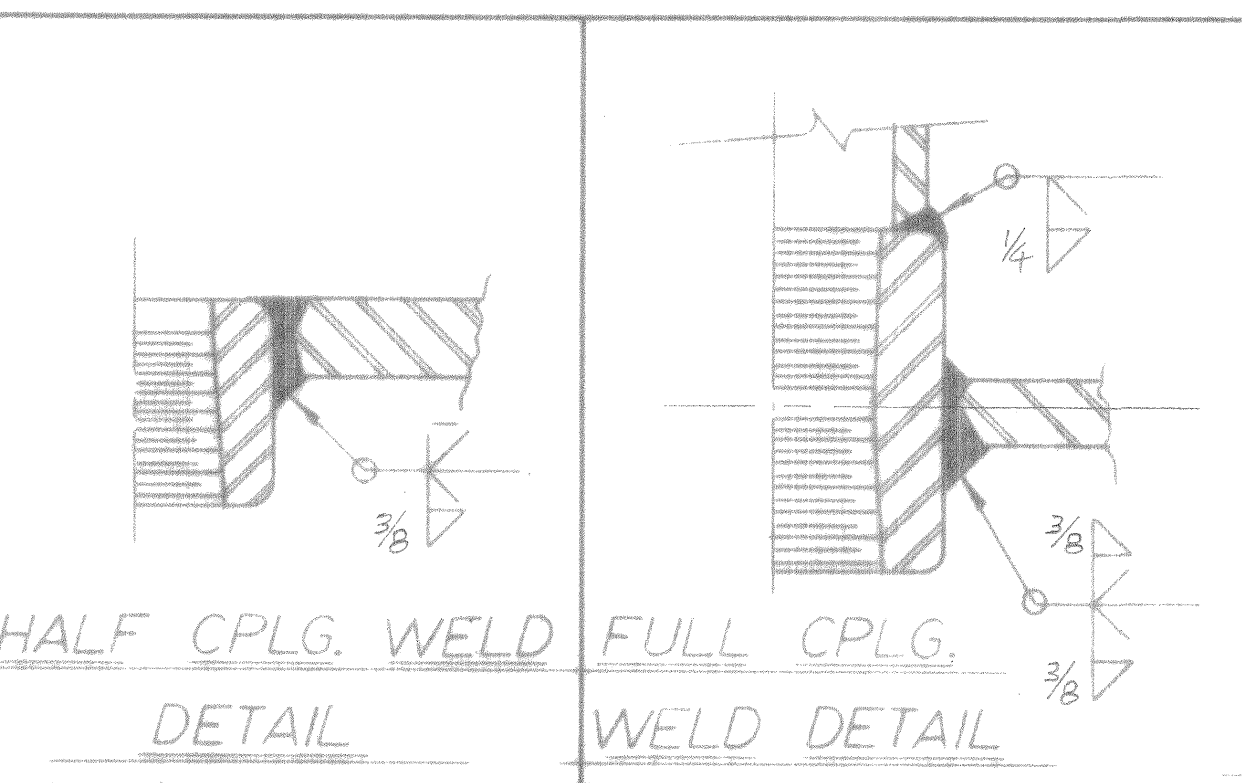
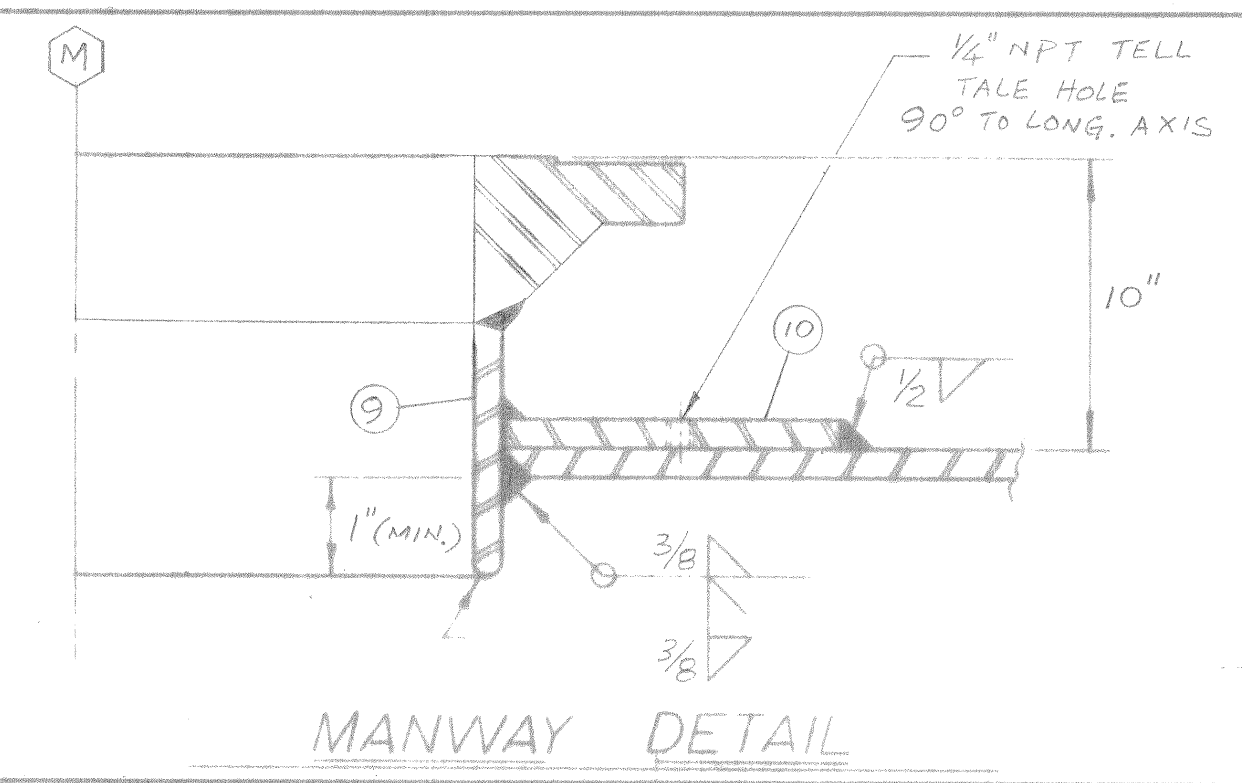
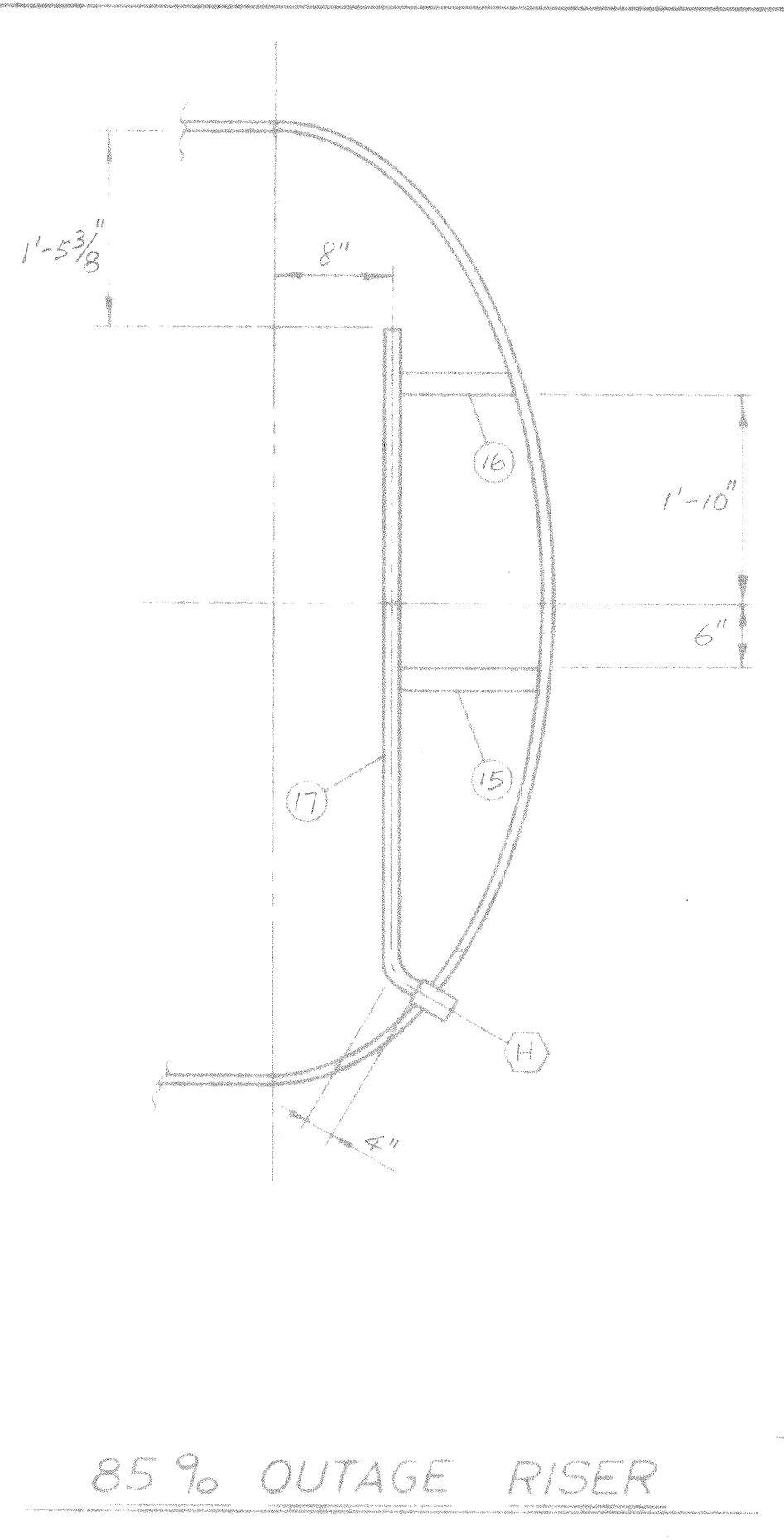
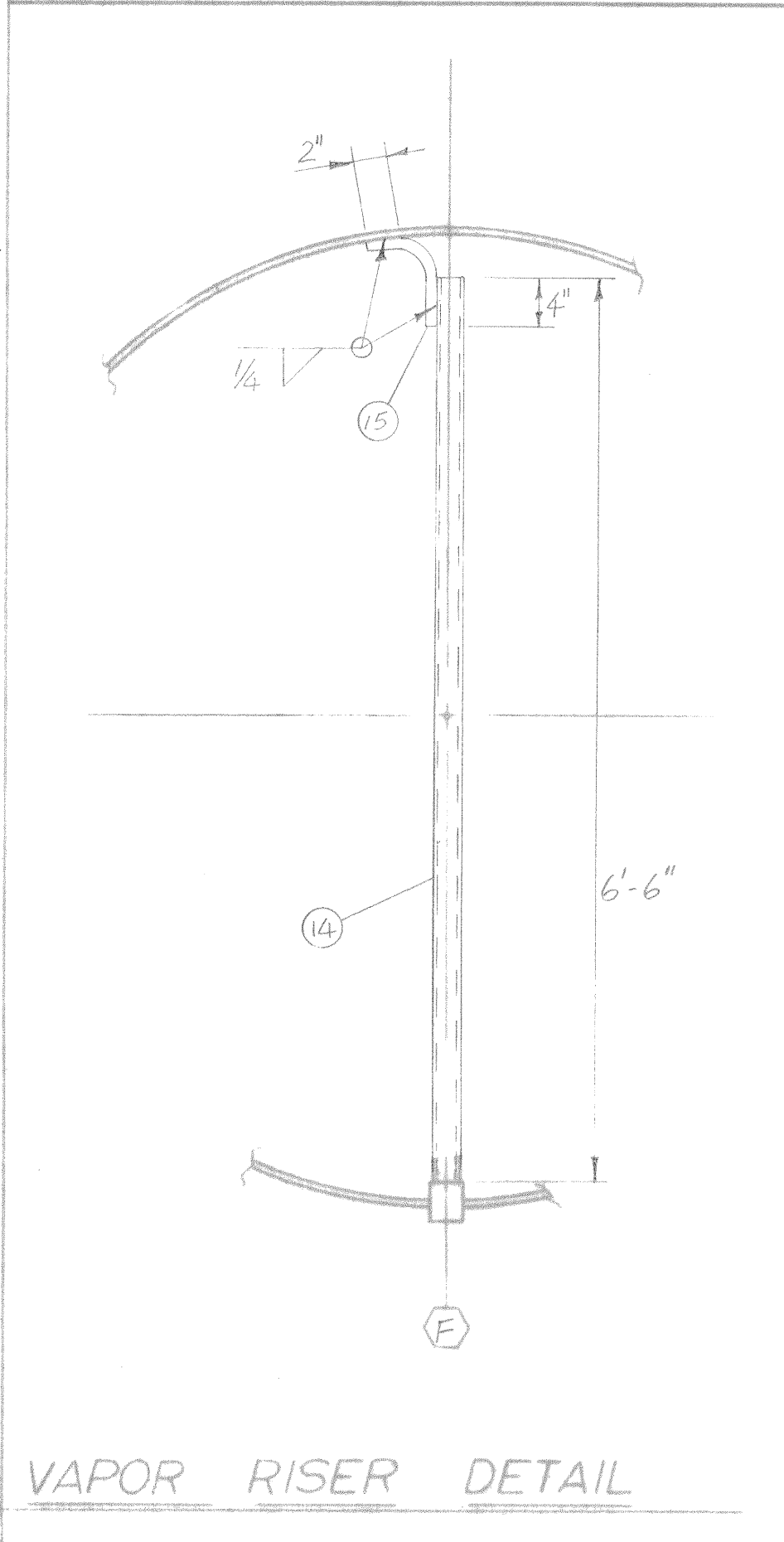
NO.	QTY.	DESCRIPTION
1	2	0.6010" THK. S.E. HEAD 2:1 RATIO 9/16" S.F. SA516-70 x 84" I.D.
2	3	0.6052" THK. R. SA516-70 x 117" WD x 268" LG.
3	2	3/8" R SA516-70 x 16" WD x 8'-0" LG. (WEAR PAD)
4	2	SADDLE DRWG. # 704-5C RIGHT-HAND SIDE SADDLE TO BE SHIPPED LOOSE
5	1	WESTERN STD. DATA PLATE, DRWG. # 7902-7A
6	1	STD. DATA PLATE BRACKET DRWG. # 6912-8A
7	1	1/8" x 1" R SA36 x 6" LG (GROUND STRAP)
8	1	16" 150# RF BLIND FLG SA105
9	1	16" Ø XS. PIPE SMLS. SA53 x 8" LG.
10	1	0.6052" THK. R SA516-70 x 16 1/4" I.D. x 30 1/4" O.D.
11	1	1/16" GARLOCK COMPRESSED ASBESTOS GASKET TO SUIT
12	16	1" Ø x 5 1/4" LG. SA193-B7 STUDS 1/2" TWO SA194-2H HEX. NUT EACH.
13	3	2" Ø XS. PIPE SMLS. SA53 x 5 1/2" LG.
14	1	2 1/2" Ø STD PIPE SA53 x 6'-6" LG.
15	2	1/2" x 2" R SA36 x 12" LG.
16	1	1/2" x 2" R SA36 x 10" LG.
17	1	3/4" Ø STD. PIPE SA53 x 5'-0" LG.

**SHOP NOTES**

- 1) FLANGE BOLT HOLES TO STRADDLE NATURAL E
- 2) REMOVE ALL SHARP CORNER
- 3) DO NOT USE SERVICE BOLTS OR GASKET FOR HYDROTESTING
- 4) SHIP VESSEL WITH SERVICE BLIND, GASKET & BOLTING IN PLACE
- 5) PLUG OPENINGS (E) & (J) WITH F.S. PLUG
- 6) WELD ONLY LEFT-HAND SIDE SADDLE TO WEAR PAD

SCHEDULE OF OPENINGS							
NO.	SIZE	RATING	TYPE	NO. OF	FLANGE MATERIAL	WELD MATERIAL	SERVICE
M	16"	150#	R.F.W.N.	XS	SA105	SA53	MANWAY
A	2"	150#	R.F.W.N.	XS	SA105	SA53	RELIEF LEVEL
B	2"	150#	R.F.W.N.	XS	SA105	SA53	GAGE GLASS CONN.
C	3"	6000#	H.C.PLG.		SA105		LIQUID OUTLET
D	2"	6000#	H.C.PLG.		SA105		LIQUID INLET
E	2"	6000#	H.C.PLG.		SA105		DRAIN
F	2"	6000#	F.C.PLG.		SA105		VAPOR OUTLET
G	1 1/4"	6000#	H.C.PLG.		SA105		VENT
H	3/4"	6000#	F.C.PLG.		SA105		85% OUTAGE
J	1/2" NPT						DRWG. 722-19A THERMOWELL

DESIGN DATA			
CODE	ASME SEC VIII DIV. 1	EDN 30	SYMBOL UW112 Q
Des Press Int	224 PSIG	Ext. PSIG	Diam 84" I.D. x Length 33'-3"
Design Temp	115 °F		Capacity 34.75 m <sup>3</sup>
Cor Allow Head	1/16" Shell	1/16" Head	Head Type S.E. 2:1
Radiographed Head	SMLS	Shell LONG-FULL CIRC. PARTIAL	Head Material SA516-70
Stiff Eff Head	100% Shell	100%	Head Thickness 0.6010"
Stress Relieved	HEADS ONLY		Shell Material SA516-70
Hydro Test New & Cold	336 PSIG		Shell Thickness 0.6052"
Hydro Test Limited By	SHELL		Studs SA193-B7 Nuts SA194-2H
			MW Gaskets 1/16" COMP. ASBESTOS
Landblast	YES		Flanges & Pipe See Sched & Dwg
Paint	RED OXIDE PRIMER		Support Mtl - See Dwg
Est Shipping Weight	21000# (BARREL)		Reinforcing Mtl SA516-70
CR No. E 547.2			



**WESTERN**

9100 USWG LPG STORAGE FOR CLEARPORT PETROLEUMS LTD LAC ST ANNE, ALBERTA

DWN	SL	CHK	DATE	81-06-03	DRAWING NO.	REV.
			SCALE	3/8" = 1'-0"	8106-1D	