



95 TRAILER- Single / Two Stage

Engine

Manufacturer	Caterpillar
Model	G3304 NA
Rated HP	95
RPM	1800
NO _x	15.8g/BHP-hr
CO ₂	482g/BHP-hr
CO	1.6g/BHP-hr
Exhaust Flow	702lb/hr
Exhaust noise with Silex	Residential Grade Model JA-4-S1
dBa at 1 Meter	89
dBa at 15 Meters	65
dBa at 50 Meters	55
Fuel Consumption	19.0 MSCFD
Engine Fan Noise	
dBa at 1 Meter	102
dBa at 15 Meters	82
dBa at 50 Meters	70

Compressor

Manufacturer	Gemini
Model	M302
Throws	Two
Rod Load Compression	6,000lbs
Rod Load Tension	6,000lbs

Cooler

Manufacturer	GEA Rainey
Model	C32S-G-HP
dBa at 1 Meter	85
dBa at 15 Meters	61
dBa at 50 Meters	51
Fan Diameter	32"
Fan Speed	1800 RPM
Fan Tip Speed	15,000 FPM

Weights and Shipping Dimensions

Trailer Length	17'-0"
Trailer Width	7'-10"
Trailer Height	11'-7"
Trailer Weight	12,000lbs



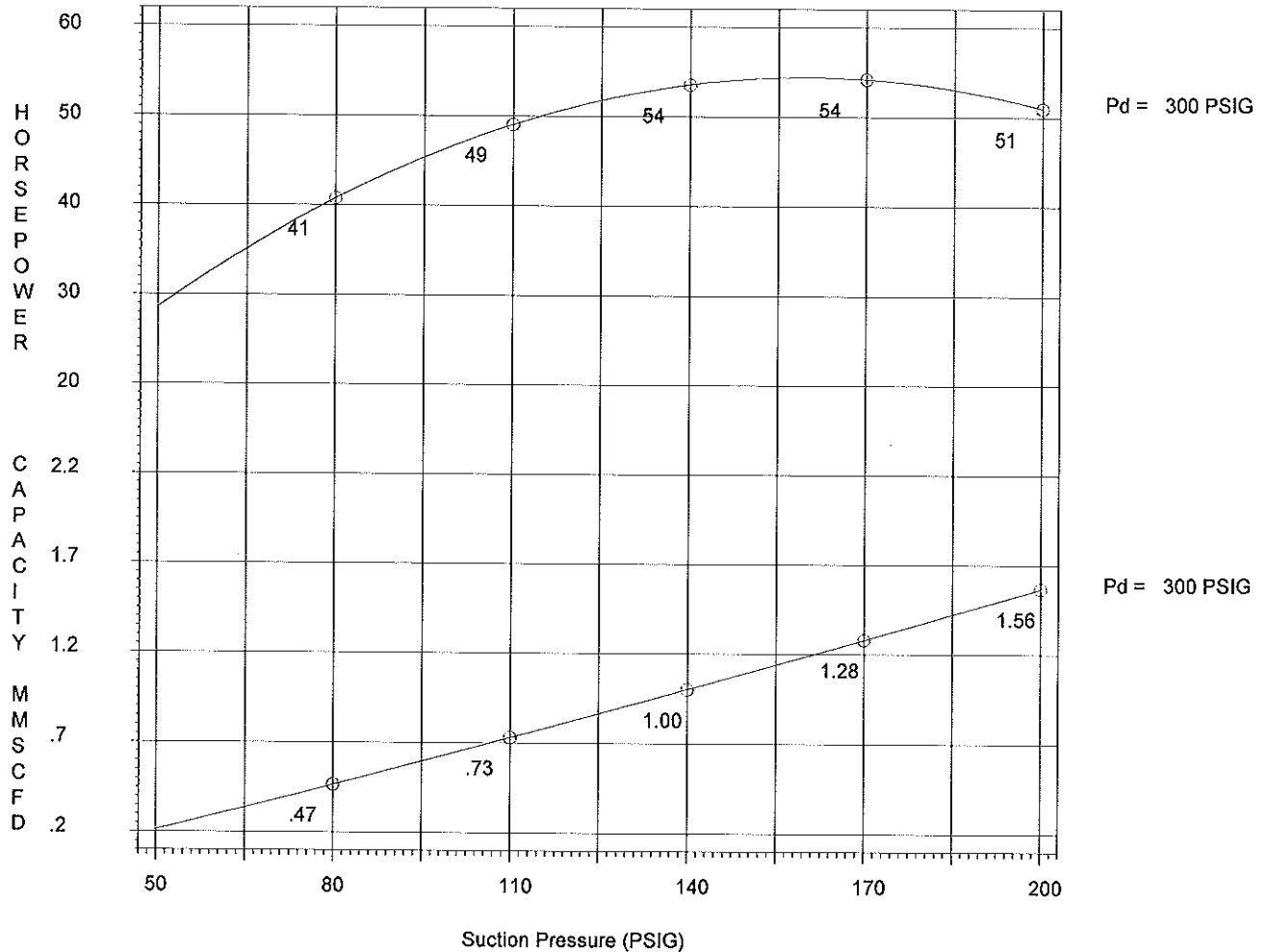
GE OIL AND GAS High Speed Reciprocating Compressors

Unit I.D.: Bluewater unit
Location:

Driver: Caterpillar
Model: G3304NA

Compressor: GE
Model: M30X

Customer: 1269844AB LTD
Quote #:



UNIT DATA	Cylinder Data - Load Step #1					
Date 09-26-2017	Step #	Stage Ref.	Cyl. Dia. (Inches)	Clearance %		Cyl. Ref.
Atm. Press. (PSIA) 14.700				H.E.	C.E.	
Rated Horsepower (BHP).		1	3.000	19.60	26.00	1
Rated Speed (RPM) 1800		1	3.000	19.60	26.00	2
Curve Speed (RPM) 1800						
# of Stages 1						
K-Value 1.260						
Sp. Gravity65						
Rod Diameter (Inches).. 1.125						
Unit Stroke (Inches) .. 3.000						
Disch. Press. (PSIG) .. 303						

COMMENTS AND NOTES

Service # 1 Line Ps(PSIG) = 50.0 Line Pd(PSIG) = 300.0

GE OIL AND GAS, its owners, affiliates, or agents assume no liability for any consequences, damages or loss of production as a result of use or misuse of the information or calculations contained in this program.



GE OIL AND GAS

High Speed Reciprocating Compressors

Unit I.D.: Bluewater unit

Driver: Caterpillar

Compressor: GE

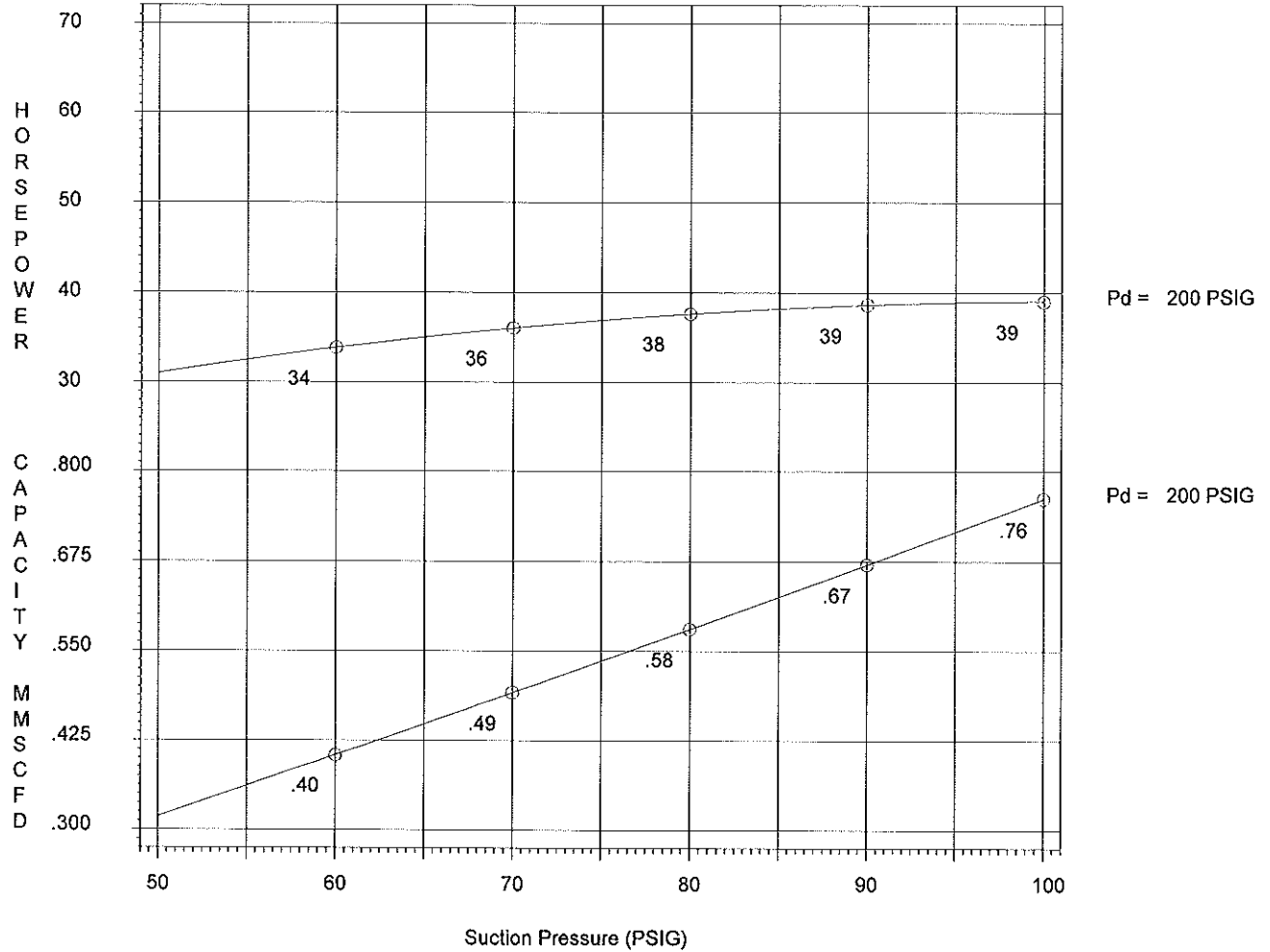
Customer: 1269844AB LTD

Location:

Model: G3304NA

Model: M30X

Quote #:



UNIT DATA	Cylinder Data - Load Step #1					
Date 09-26-2017	Step #	Stage Ref.	Cyl. Dia. (Inches)	Clearance %		Cyl. Ref.
Atm. Press. (PSIA) 14.700				H.E.	C.E.	
Rated Horsepower (BHP).		1	3.000	19.60	26.00	1
Rated Speed (RPM) 1800		1	3.000	19.60	26.00	2
Curve Speed (RPM) 1800						
# of Stages 1						
K-Value 1.260						
Sp. Gravity65						
Rod Diameter (Inches).. 1.125						
Unit Stroke (Inches) .. 3.000						
Disch. Press. (PSIG) .. 202						

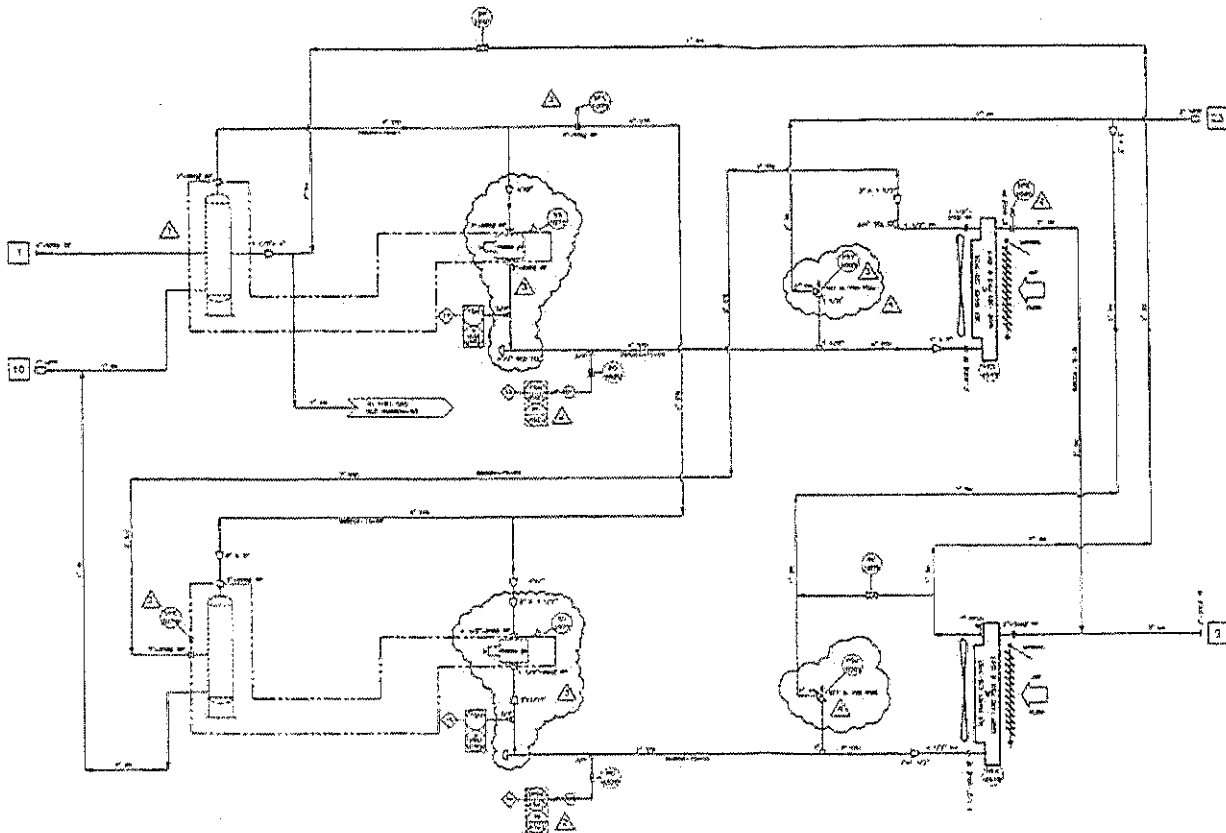
COMMENTS AND NOTES

Service # 1 Line Ps(PSIG) = 50.0 Line Pd(PSIG) = 200.0

GE OIL AND GAS, its owners, affiliates, or agents assume no liability for any consequences, damages or loss of production as a result of use or misuse of the information or calculations contained in this program.

DRAWING NO. 808004-0-12

UNIVERSAL COMPRESSION CO. INC.



BILL OF MATERIAL	
ITEM NO.	DESCRIPTION
1	...
2	...
3	...
4	...
5	...
6	...
7	...
8	...
9	...
10	...
11	...
12	...
13	...
14	...
15	...
16	...
17	...
18	...
19	...
20	...
21	...
22	...
23	...
24	...
25	...
26	...
27	...
28	...
29	...
30	...
31	...
32	...
33	...
34	...
35	...
36	...
37	...
38	...
39	...
40	...
41	...
42	...
43	...
44	...
45	...
46	...
47	...
48	...
49	...
50	...
51	...
52	...
53	...
54	...
55	...
56	...
57	...
58	...
59	...
60	...
61	...
62	...
63	...
64	...
65	...
66	...
67	...
68	...
69	...
70	...
71	...
72	...
73	...
74	...
75	...
76	...
77	...
78	...
79	...
80	...
81	...
82	...
83	...
84	...
85	...
86	...
87	...
88	...
89	...
90	...
91	...
92	...
93	...
94	...
95	...
96	...
97	...
98	...
99	...
100	...

CUSTOMER CONNECTIONS		PACKAGE CONNECTIONS	
NO.	DESCRIPTION	NO.	DESCRIPTION
1	...	1	...
2	...	2	...
3	...	3	...
4	...	4	...
5	...	5	...
6	...	6	...
7	...	7	...
8	...	8	...
9	...	9	...
10	...	10	...
11	...	11	...
12	...	12	...
13	...	13	...
14	...	14	...
15	...	15	...
16	...	16	...
17	...	17	...
18	...	18	...
19	...	19	...
20	...	20	...
21	...	21	...
22	...	22	...
23	...	23	...
24	...	24	...
25	...	25	...
26	...	26	...
27	...	27	...
28	...	28	...
29	...	29	...
30	...	30	...
31	...	31	...
32	...	32	...
33	...	33	...
34	...	34	...
35	...	35	...
36	...	36	...
37	...	37	...
38	...	38	...
39	...	39	...
40	...	40	...
41	...	41	...
42	...	42	...
43	...	43	...
44	...	44	...
45	...	45	...
46	...	46	...
47	...	47	...
48	...	48	...
49	...	49	...
50	...	50	...
51	...	51	...
52	...	52	...
53	...	53	...
54	...	54	...
55	...	55	...
56	...	56	...
57	...	57	...
58	...	58	...
59	...	59	...
60	...	60	...
61	...	61	...
62	...	62	...
63	...	63	...
64	...	64	...
65	...	65	...
66	...	66	...
67	...	67	...
68	...	68	...
69	...	69	...
70	...	70	...
71	...	71	...
72	...	72	...
73	...	73	...
74	...	74	...
75	...	75	...
76	...	76	...
77	...	77	...
78	...	78	...
79	...	79	...
80	...	80	...
81	...	81	...
82	...	82	...
83	...	83	...
84	...	84	...
85	...	85	...
86	...	86	...
87	...	87	...
88	...	88	...
89	...	89	...
90	...	90	...
91	...	91	...
92	...	92	...
93	...	93	...
94	...	94	...
95	...	95	...
96	...	96	...
97	...	97	...
98	...	98	...
99	...	99	...
100	...	100	...

GENERAL NOTES

1. PROCESS INSTRUMENT SYMBOLS: SEE UNIVERSAL INSTRUMENT SYMBOLS LIST.
2. INSTRUMENT SYMBOLS: SEE UNIVERSAL INSTRUMENT SYMBOLS LIST.
3. INSTRUMENT SYMBOLS: SEE UNIVERSAL INSTRUMENT SYMBOLS LIST.
4. ALL INSTRUMENT SYMBOLS: SEE UNIVERSAL INSTRUMENT SYMBOLS LIST.
5. INSTRUMENT SYMBOLS: SEE UNIVERSAL INSTRUMENT SYMBOLS LIST.
6. INSTRUMENT SYMBOLS: SEE UNIVERSAL INSTRUMENT SYMBOLS LIST.
7. INSTRUMENT SYMBOLS: SEE UNIVERSAL INSTRUMENT SYMBOLS LIST.
8. INSTRUMENT SYMBOLS: SEE UNIVERSAL INSTRUMENT SYMBOLS LIST.
9. INSTRUMENT SYMBOLS: SEE UNIVERSAL INSTRUMENT SYMBOLS LIST.
10. INSTRUMENT SYMBOLS: SEE UNIVERSAL INSTRUMENT SYMBOLS LIST.

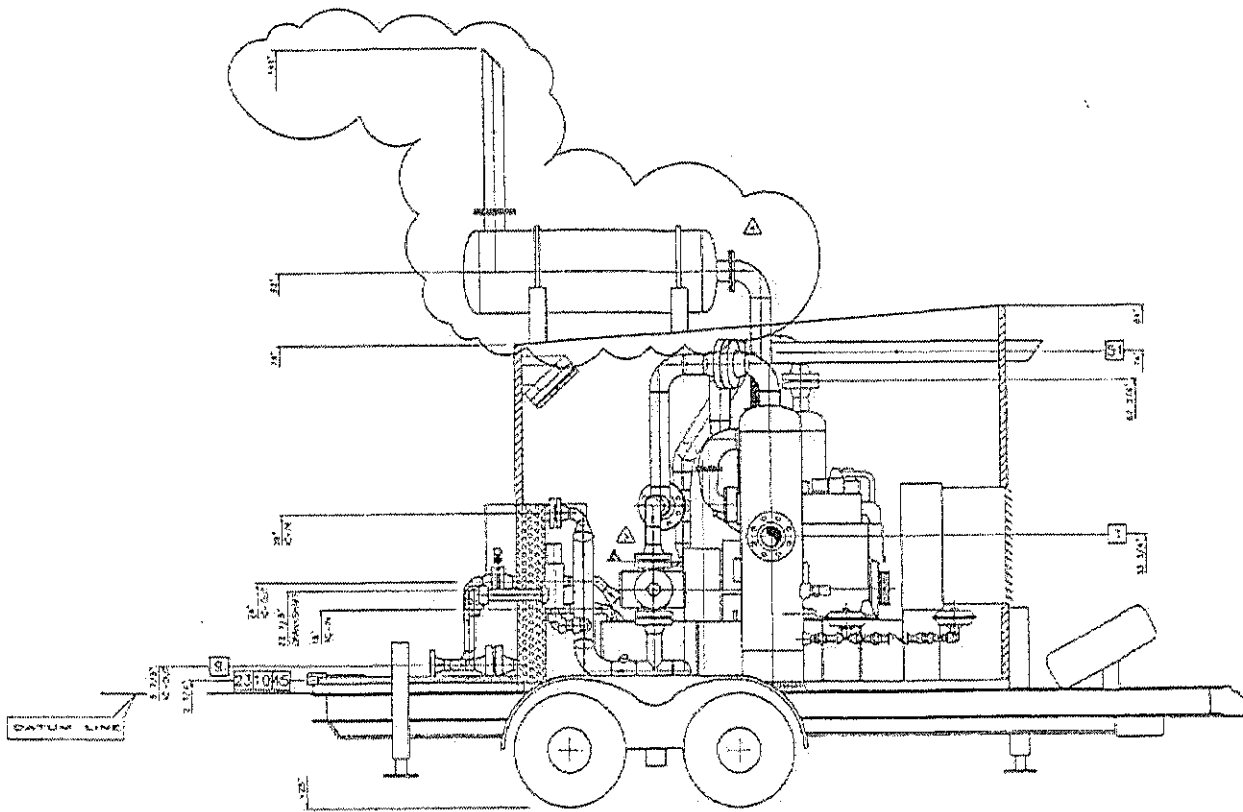
NO.	DESCRIPTION	DATE	BY
1
2
3
4
5
6
7
8
9
10
11
12
13
14
15
16
17
18
19
20
21
22
23
24
25
26
27
28
29
30
31
32
33
34
35
36
37
38
39
40
41
42
43
44
45
46
47
48
49
50
51
52
53
54
55
56
57
58
59
60
61
62
63
64
65
66
67
68
69
70
71
72
73
74
75
76
77
78
79
80
81
82
83
84
85
86
87
88
89
90
91
92
93
94
95
96
97
98
99
100

UNIVERSAL COMPRESSION

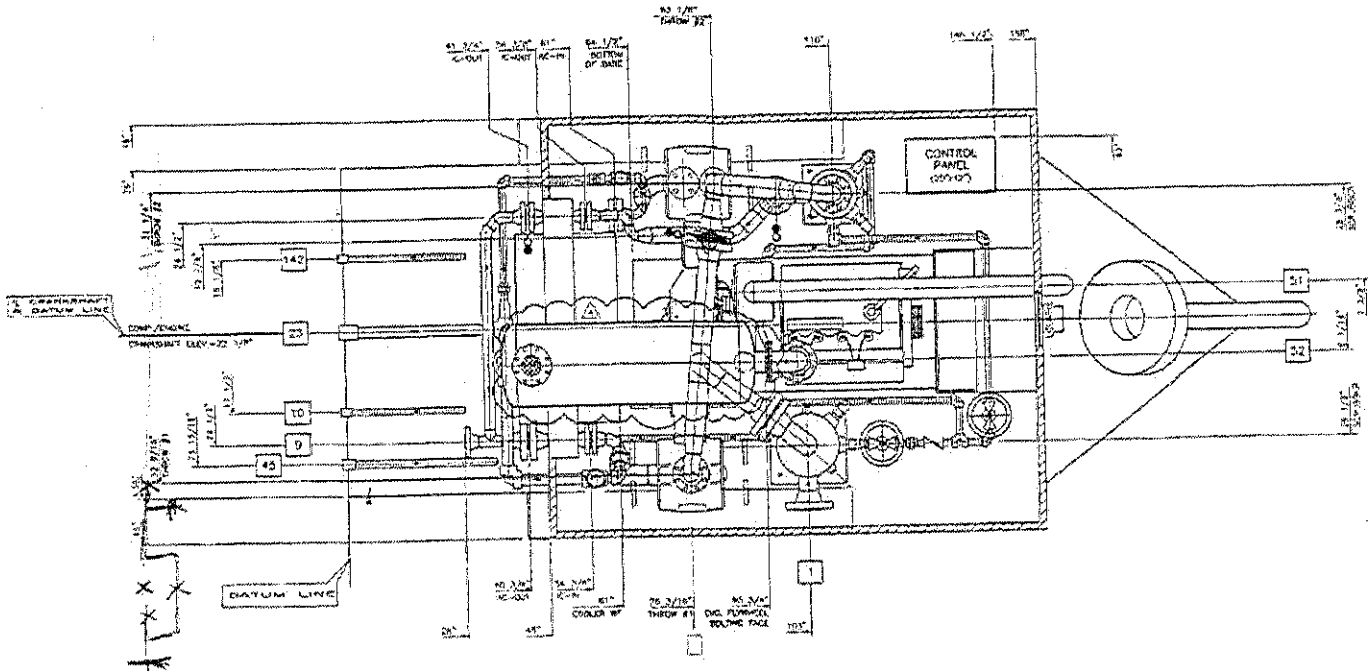
PROCESS & INSTRUMENT DIAGRAM

UNIVERSAL COMPRESSION CO. INC.

808004-0-12



CUSTOMER CONNECTIONS		PACKAGE CONNECTIONS		ESTIMATED WEIGHTS		GENERAL NOTES		UNIVERSAL [®] COMPRESSION	
NO.	DESCRIPTION	SIZE	DESCRIPTION	NO.	DESCRIPTION	1	IN ALL WEIGHTS REFERENCED TO THIS UNIT, THE WEIGHT OF THE TRAILER IS NOT INCLUDED.	UNIVERSAL[®] COMPRESSION 10000 W. 100th St., Minneapolis, Minn. 55438 Phone: 612-835-1111 Telex: 251111 UNIVCOMP	
1	2	ALL WEIGHTS ARE ESTIMATED WEIGHTS.		
2	3	WEIGHTS ARE IN POUNDS.	GENERAL ARRANGEMENT (PLAN) SHOWS UNIT INSTALLED ON TRAILER. SEE DRAWING FOR CONNECTIONS.	
3	4	WEIGHTS ARE IN POUNDS.		
4	5	WEIGHTS ARE IN POUNDS.	LEAVE EMPTY NO. OF UNITS: _____ NO. OF TRAILERS: _____ NO. OF TRUCKS: _____ NO. OF PUMPS: _____ NO. OF COMPRESSORS: _____ NO. OF CONDENSERS: _____ NO. OF REFRIGERATORS: _____ NO. OF DRYERS: _____ NO. OF SEPARATORS: _____ NO. OF FILTERS: _____ NO. OF VALVES: _____ NO. OF FITTINGS: _____ NO. OF HOSES: _____ NO. OF CABLES: _____ NO. OF WIRING: _____ NO. OF PIPING: _____ NO. OF STRUCTURE: _____ NO. OF FOUNDATION: _____ NO. OF ELECTRICAL: _____ NO. OF MECHANICAL: _____ NO. OF PLUMBING: _____ NO. OF HEATING: _____ NO. OF COOLING: _____ NO. OF AIR CONDITIONING: _____ NO. OF VENTILATION: _____ NO. OF EXHAUST: _____ NO. OF INTAKE: _____ NO. OF FUEL: _____ NO. OF OIL: _____ NO. OF WATER: _____ NO. OF GAS: _____ NO. OF LIQUID: _____ NO. OF SOLID: _____ NO. OF OTHER: _____	
5	6	WEIGHTS ARE IN POUNDS.		
6	7	WEIGHTS ARE IN POUNDS.		
7	8	WEIGHTS ARE IN POUNDS.	998004-D-28 UNIVCOMP	
8	9	WEIGHTS ARE IN POUNDS.		
9	10	WEIGHTS ARE IN POUNDS.	998004-D-28 UNIVCOMP	
10	11	WEIGHTS ARE IN POUNDS.		
11	12	WEIGHTS ARE IN POUNDS.	998004-D-28 UNIVCOMP	
12	13	WEIGHTS ARE IN POUNDS.		
13	14	WEIGHTS ARE IN POUNDS.	998004-D-28 UNIVCOMP	
14	15	WEIGHTS ARE IN POUNDS.		
15	16	WEIGHTS ARE IN POUNDS.	998004-D-28 UNIVCOMP	
16	17	WEIGHTS ARE IN POUNDS.		
17	18	WEIGHTS ARE IN POUNDS.	998004-D-28 UNIVCOMP	
18	19	WEIGHTS ARE IN POUNDS.		
19	20	WEIGHTS ARE IN POUNDS.	998004-D-28 UNIVCOMP	
20	21	WEIGHTS ARE IN POUNDS.		
21	22	WEIGHTS ARE IN POUNDS.	998004-D-28 UNIVCOMP	
22	23	WEIGHTS ARE IN POUNDS.		
23	24	WEIGHTS ARE IN POUNDS.	998004-D-28 UNIVCOMP	
24	25	WEIGHTS ARE IN POUNDS.		
25	26	WEIGHTS ARE IN POUNDS.	998004-D-28 UNIVCOMP	
26	27	WEIGHTS ARE IN POUNDS.		
27	28	WEIGHTS ARE IN POUNDS.	998004-D-28 UNIVCOMP	
28	29	WEIGHTS ARE IN POUNDS.		
29	30	WEIGHTS ARE IN POUNDS.	998004-D-28 UNIVCOMP	
30	31	WEIGHTS ARE IN POUNDS.		
31	32	WEIGHTS ARE IN POUNDS.	998004-D-28 UNIVCOMP	
32	33	WEIGHTS ARE IN POUNDS.		
33	34	WEIGHTS ARE IN POUNDS.	998004-D-28 UNIVCOMP	
34	35	WEIGHTS ARE IN POUNDS.		
35	36	WEIGHTS ARE IN POUNDS.	998004-D-28 UNIVCOMP	
36	37	WEIGHTS ARE IN POUNDS.		
37	38	WEIGHTS ARE IN POUNDS.	998004-D-28 UNIVCOMP	
38	39	WEIGHTS ARE IN POUNDS.		
39	40	WEIGHTS ARE IN POUNDS.	998004-D-28 UNIVCOMP	
40	41	WEIGHTS ARE IN POUNDS.		
41	42	WEIGHTS ARE IN POUNDS.	998004-D-28 UNIVCOMP	
42	43	WEIGHTS ARE IN POUNDS.		
43	44	WEIGHTS ARE IN POUNDS.	998004-D-28 UNIVCOMP	
44	45	WEIGHTS ARE IN POUNDS.		
45	46	WEIGHTS ARE IN POUNDS.	998004-D-28 UNIVCOMP	
46	47	WEIGHTS ARE IN POUNDS.		
47	48	WEIGHTS ARE IN POUNDS.	998004-D-28 UNIVCOMP	
48	49	WEIGHTS ARE IN POUNDS.		
49	50	WEIGHTS ARE IN POUNDS.	998004-D-28 UNIVCOMP	
50	51	WEIGHTS ARE IN POUNDS.		
51	52	WEIGHTS ARE IN POUNDS.	998004-D-28 UNIVCOMP	
52	53	WEIGHTS ARE IN POUNDS.		
53	54	WEIGHTS ARE IN POUNDS.	998004-D-28 UNIVCOMP	
54	55	WEIGHTS ARE IN POUNDS.		
55	56	WEIGHTS ARE IN POUNDS.	998004-D-28 UNIVCOMP	
56	57	WEIGHTS ARE IN POUNDS.		
57	58	WEIGHTS ARE IN POUNDS.	998004-D-28 UNIVCOMP	
58	59	WEIGHTS ARE IN POUNDS.		
59	60	WEIGHTS ARE IN POUNDS.	998004-D-28 UNIVCOMP	
60	61	WEIGHTS ARE IN POUNDS.		
61	62	WEIGHTS ARE IN POUNDS.	998004-D-28 UNIVCOMP	
62	63	WEIGHTS ARE IN POUNDS.		
63	64	WEIGHTS ARE IN POUNDS.	998004-D-28 UNIVCOMP	
64	65	WEIGHTS ARE IN POUNDS.		
65	66	WEIGHTS ARE IN POUNDS.	998004-D-28 UNIVCOMP	
66	67	WEIGHTS ARE IN POUNDS.		
67	68	WEIGHTS ARE IN POUNDS.	998004-D-28 UNIVCOMP	
68	69	WEIGHTS ARE IN POUNDS.		
69	70	WEIGHTS ARE IN POUNDS.	998004-D-28 UNIVCOMP	
70	71	WEIGHTS ARE IN POUNDS.		
71	72	WEIGHTS ARE IN POUNDS.	998004-D-28 UNIVCOMP	
72	73	WEIGHTS ARE IN POUNDS.		
73	74	WEIGHTS ARE IN POUNDS.	998004-D-28 UNIVCOMP	
74	75	WEIGHTS ARE IN POUNDS.		
75	76	WEIGHTS ARE IN POUNDS.	998004-D-28 UNIVCOMP	
76	77	WEIGHTS ARE IN POUNDS.		
77	78	WEIGHTS ARE IN POUNDS.	998004-D-28 UNIVCOMP	
78	79	WEIGHTS ARE IN POUNDS.		
79	80	WEIGHTS ARE IN POUNDS.	998004-D-28 UNIVCOMP	
80	81	WEIGHTS ARE IN POUNDS.		
81	82	WEIGHTS ARE IN POUNDS.	998004-D-28 UNIVCOMP	
82	83	WEIGHTS ARE IN POUNDS.		
83	84	WEIGHTS ARE IN POUNDS.	998004-D-28 UNIVCOMP	
84	85	WEIGHTS ARE IN POUNDS.		
85	86	WEIGHTS ARE IN POUNDS.	998004-D-28 UNIVCOMP	
86	87	WEIGHTS ARE IN POUNDS.		
87	88	WEIGHTS ARE IN POUNDS.	998004-D-28 UNIVCOMP	
88	89	WEIGHTS ARE IN POUNDS.		
89	90	WEIGHTS ARE IN POUNDS.	998004-D-28 UNIVCOMP	
90	91	WEIGHTS ARE IN POUNDS.		
91	92	WEIGHTS ARE IN POUNDS.	998004-D-28 UNIVCOMP	
92	93	WEIGHTS ARE IN POUNDS.		
93	94	WEIGHTS ARE IN POUNDS.	998004-D-28 UNIVCOMP	
94	95	WEIGHTS ARE IN POUNDS.		
95	96	WEIGHTS ARE IN POUNDS.	998004-D-28 UNIVCOMP	
96	97	WEIGHTS ARE IN POUNDS.		
97	98	WEIGHTS ARE IN POUNDS.	998004-D-28 UNIVCOMP	
98	99	WEIGHTS ARE IN POUNDS.		
99	100	WEIGHTS ARE IN POUNDS.	998004-D-28 UNIVCOMP	



CUSTOMER CONNECTIONS		PACKAGE CONNECTIONS		ESTIMATED WEIGHTS		GENERAL NOTES		UNIVERSAL COMPRESSION	
<p>1. INLET GAS SERVICE</p> <p>2. INLET GAS SERVICE</p> <p>3. INLET GAS SERVICE</p> <p>4. INLET GAS SERVICE</p> <p>5. INLET GAS SERVICE</p> <p>6. INLET GAS SERVICE</p> <p>7. INLET GAS SERVICE</p> <p>8. INLET GAS SERVICE</p> <p>9. INLET GAS SERVICE</p> <p>10. INLET GAS SERVICE</p> <p>11. INLET GAS SERVICE</p> <p>12. INLET GAS SERVICE</p> <p>13. INLET GAS SERVICE</p> <p>14. INLET GAS SERVICE</p> <p>15. INLET GAS SERVICE</p> <p>16. INLET GAS SERVICE</p> <p>17. INLET GAS SERVICE</p> <p>18. INLET GAS SERVICE</p> <p>19. INLET GAS SERVICE</p> <p>20. INLET GAS SERVICE</p>		<p>1. COOLANT IN</p> <p>2. COOLANT OUT</p> <p>3. DISCHARGE</p> <p>4. EXHAUST</p> <p>5. EXHAUST</p> <p>6. EXHAUST</p> <p>7. EXHAUST</p> <p>8. EXHAUST</p> <p>9. EXHAUST</p> <p>10. EXHAUST</p> <p>11. EXHAUST</p> <p>12. EXHAUST</p> <p>13. EXHAUST</p> <p>14. EXHAUST</p> <p>15. EXHAUST</p> <p>16. EXHAUST</p> <p>17. EXHAUST</p> <p>18. EXHAUST</p> <p>19. EXHAUST</p> <p>20. EXHAUST</p>		<p>1. 100 LBS</p> <p>2. 100 LBS</p> <p>3. 100 LBS</p> <p>4. 100 LBS</p> <p>5. 100 LBS</p> <p>6. 100 LBS</p> <p>7. 100 LBS</p> <p>8. 100 LBS</p> <p>9. 100 LBS</p> <p>10. 100 LBS</p> <p>11. 100 LBS</p> <p>12. 100 LBS</p> <p>13. 100 LBS</p> <p>14. 100 LBS</p> <p>15. 100 LBS</p> <p>16. 100 LBS</p> <p>17. 100 LBS</p> <p>18. 100 LBS</p> <p>19. 100 LBS</p> <p>20. 100 LBS</p>		<p>1. ALL DIMENSIONS ARE IN INCHES UNLESS OTHERWISE SPECIFIED.</p> <p>2. THIS UNIT IS DESIGNED FOR THE NORMAL OPERATION OF UNIVERSAL COMPRESSION INC. EQUIPMENT.</p> <p>3. ALL DIMENSIONS ARE TO BE MAINTAINED UNLESS OTHERWISE SPECIFIED.</p> <p>4. ALL DIMENSIONS ARE TO BE MAINTAINED UNLESS OTHERWISE SPECIFIED.</p> <p>5. ALL DIMENSIONS ARE TO BE MAINTAINED UNLESS OTHERWISE SPECIFIED.</p> <p>6. ALL DIMENSIONS ARE TO BE MAINTAINED UNLESS OTHERWISE SPECIFIED.</p> <p>7. ALL DIMENSIONS ARE TO BE MAINTAINED UNLESS OTHERWISE SPECIFIED.</p> <p>8. ALL DIMENSIONS ARE TO BE MAINTAINED UNLESS OTHERWISE SPECIFIED.</p> <p>9. ALL DIMENSIONS ARE TO BE MAINTAINED UNLESS OTHERWISE SPECIFIED.</p> <p>10. ALL DIMENSIONS ARE TO BE MAINTAINED UNLESS OTHERWISE SPECIFIED.</p> <p>11. ALL DIMENSIONS ARE TO BE MAINTAINED UNLESS OTHERWISE SPECIFIED.</p> <p>12. ALL DIMENSIONS ARE TO BE MAINTAINED UNLESS OTHERWISE SPECIFIED.</p> <p>13. ALL DIMENSIONS ARE TO BE MAINTAINED UNLESS OTHERWISE SPECIFIED.</p> <p>14. ALL DIMENSIONS ARE TO BE MAINTAINED UNLESS OTHERWISE SPECIFIED.</p> <p>15. ALL DIMENSIONS ARE TO BE MAINTAINED UNLESS OTHERWISE SPECIFIED.</p> <p>16. ALL DIMENSIONS ARE TO BE MAINTAINED UNLESS OTHERWISE SPECIFIED.</p> <p>17. ALL DIMENSIONS ARE TO BE MAINTAINED UNLESS OTHERWISE SPECIFIED.</p> <p>18. ALL DIMENSIONS ARE TO BE MAINTAINED UNLESS OTHERWISE SPECIFIED.</p> <p>19. ALL DIMENSIONS ARE TO BE MAINTAINED UNLESS OTHERWISE SPECIFIED.</p> <p>20. ALL DIMENSIONS ARE TO BE MAINTAINED UNLESS OTHERWISE SPECIFIED.</p>		<p>UNIVERSAL COMPRESSION</p> <p>100000-0-24</p>	